

School Readiness Action Plan for Austin/Travis County

2015-2018

A collaboratively developed and coordinated community plan
– convened by Success By 6 of United Way for Greater
Austin.

2012-2015 Plan



SUCCESS
BY 6

2012-2015

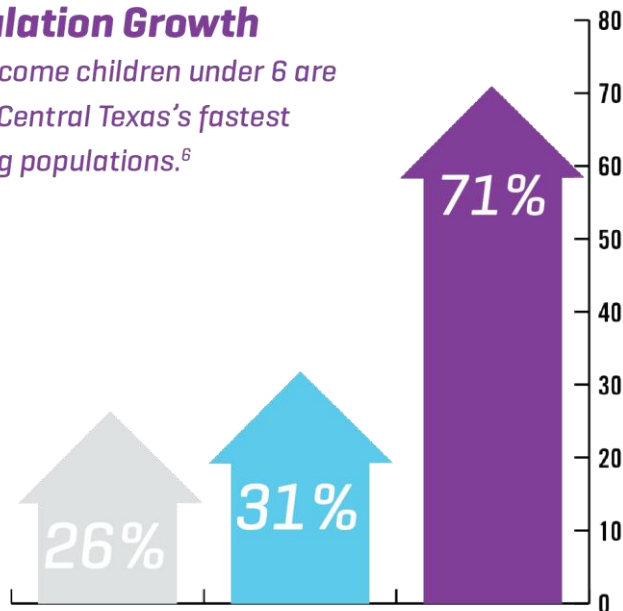
SCHOOL READINESS ACTION PLAN

For Austin/Travis County

Community Need

Population Growth

Low-income children under 6 are one of Central Texas's fastest growing populations.⁶



| | Total Population | Children Under 6 | Low-Income Children |
|------|---------------------|---------------------|------------------------|
| 2000 | 793,476 | 68,336 | 25,703 |
| 2010 | 1,102,212 | 89,422 | 43,836 |

School Readiness in our Community

Percentage of Kindergarteners who are **not ready** for school



Central Texas



Low Income

Creation of the SRAP

- Framework
- 100's of stakeholders
- Parents – community café's
- National experts & facilitators

Ready Families

+ Ready Early Education Services

+ Ready Health and Mental Health Services

+ Ready Communities

= Children Ready for School Success

Vision



Governance Structure





United Way for Greater Austin



children's
optimal health



Governance Structure

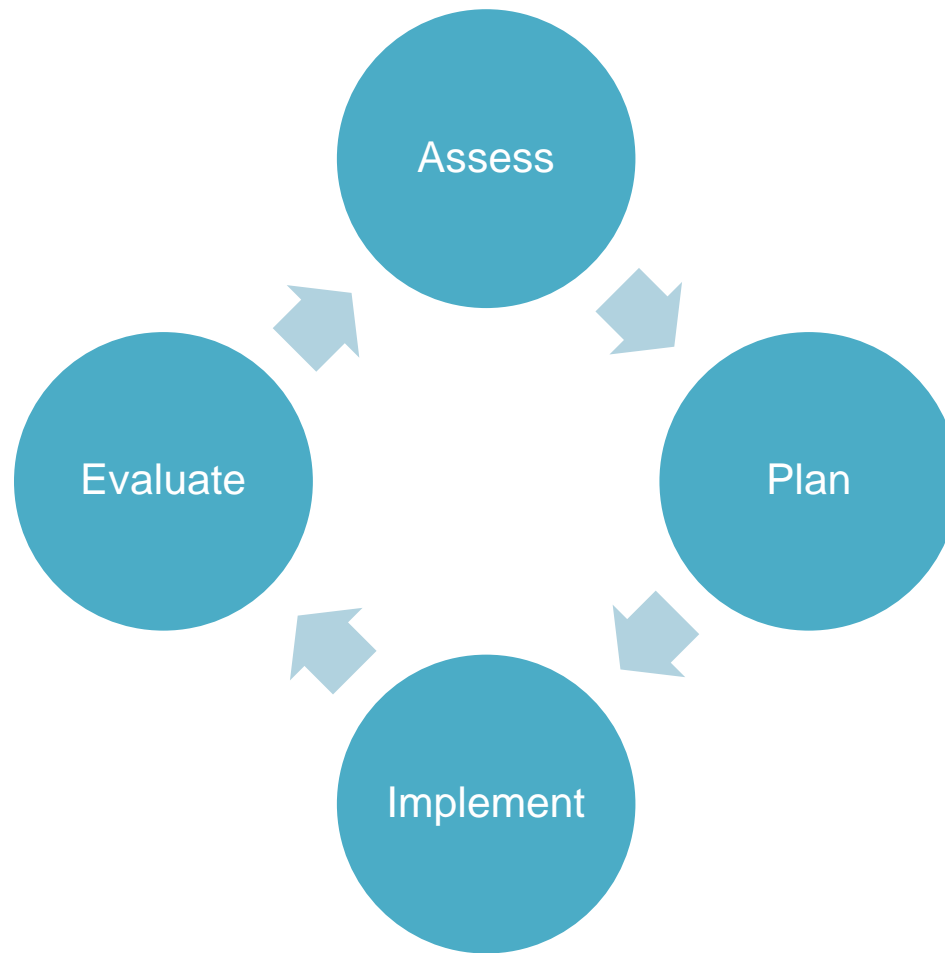
- Stakeholders and Working groups



Successes



The Planning Cycle



2015-2018 SRAP



United Way for Greater Austin



United Way for Greater Austin

**SUCCESS
BY 6**

2015-2018

**SCHOOL
READINESS
ACTION PLAN**

For Austin/Travis County

Plan Elements

Each part of Ready Child Formula has these elements included in the printed plan:

- Goals
- Strategies
- Progress Measures – Current Baseline numbers and Targets

A detailed work plan is being finalized.
The work plan will include:

- Specific action steps
- Accountable Parties
- Timeline

What's new and different?



**Support
Austin's future**



How can you support the 2015-2018 SRAP

- Help us strengthen our “Ready Health and Mental Health Services” section of the plan.
- Maintain core funding for early childhood
- Increase local investments in and support for proven early childhood programming
 - Support local efforts to serve more 3’s through mixed model pre-K.
 - Support local efforts surrounding two-generation programming.
 - Support local organizations and business leaders in exploring the feasibility of social impact bonds/Pay for Success programs.
 - \$500,000 annually needed to fill gaps in the state Child Care Subsidy system for low-income families